



Vevazz

Operation Manual

Vevazz, LLC

30520 Rancho California Road

Suite 107-46

Temecula, CA 92591

Phone: (773) 665-4005

Fax: (888) 234-2765

URL: [www.vevazz.com](http://www.vevazz.com)

## **Warranty & Service Information**

### **Proprietary Notice**

Information contained in this document is copyrighted by Vevazz, LLC and may not be duplicated in full or part by any person without prior written approval of Vevazz, LLC. Its purpose is to provide the user with adequately detailed documentation to efficiently install, operate and maintain the device supplied. Efforts have been made to keep the information contained in this document current and accurate as of the date of publication or revision.

### **Limited Warranty**

Vevazz, LLC warrants the Vevazz to be free from defects in workmanship and material under normal use for a period of one (1) year from the date of shipment. Vevazz, LLC's sole obligation under this warranty will be to repair or replace, at its option, the Vevazz that proves to be defective during the warranty period. The foregoing shall be the sole warranty remedy. Except as set forth herein, Vevazz, LLC makes no warranties, either expressed or implied, including the implied warranties of merchantability and fitness for a particular purpose. No warranty is provided if the Vevazz is modified without the express written consent of Vevazz, LLC. Vevazz, LLC shall not be liable in any event for incidental consequential damage. This warranty is not activated before the customer returns the completed Vevazz Product Registration form within 30 days after purchase of the product. This warranty is not assignable.

### **Service Support**

In order to return your Vevazz under the terms of this one year limited warranty, you must contact us for a return merchandise authorization number (RMA number) within one (1) year from the shipping date. Call us at 773-665-4005 Monday through Friday 8:00am to 5:00pm MST to obtain the RMA number from our customer service department. The return of the Vevazz and all accompanying documents must be packed carefully to prevent shipping damage. The RMA number must be clearly printed on the outside of the shipping container.

Assembly instructions



Unpack everything from the box



Long Cords



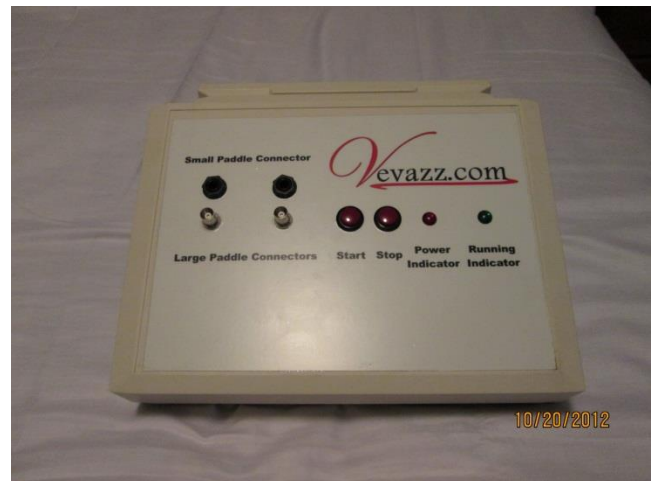
Short Cords



Small Paddles and Cords



Large Paddles



Base Unit



Power Connector in Back of Base Unit



Belts



Tape Measure

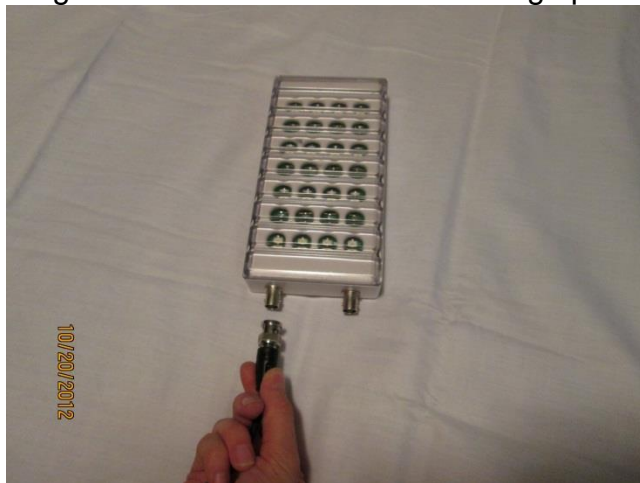
- 1. Plug the power cord into the back



2. Plug the long 2 wires into the base unit where it says large paddle



3. Plug the short wire into one of the large paddles (either connector on the paddle)



4. Plug the other end of the short wire into another free paddle (either connector on the paddle) – Optional connection for 2 paddle – one long wire into each paddle – and nothing more.



5. If you have 4 paddles - Repeat steps 3&4 with the other short wire and another different large paddle - you will have two sets of two paddles connected by a short wire. (either connector on the paddles)

If you only have two paddles skip to step 8



6. If you have 6 paddles – add one more paddle to each set of two paddles with a short wire for each paddle – to make two sets of 3 paddles connected together 2 short wires (either connector on the paddles)

if you only have 4 paddles skip to step 8



7. If you have 8 paddles – Repeat steps 6 – so you end up with two sets of 4 paddles connected by 3 short wires.  
If you only have 6 paddles skip to step 8



8. Plug the long wire into the paddle  
If you have more than two paddles, plug the long wire into one of the end paddles on one of the series of paddles

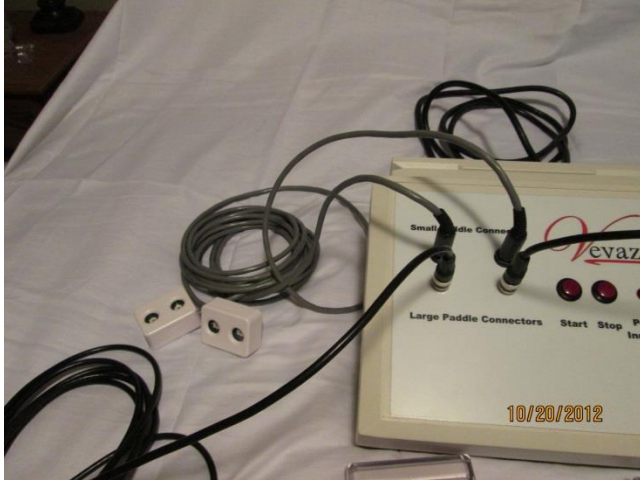


9. Plug the other long wire into the other paddle or series of paddles if you have more than 2 paddles

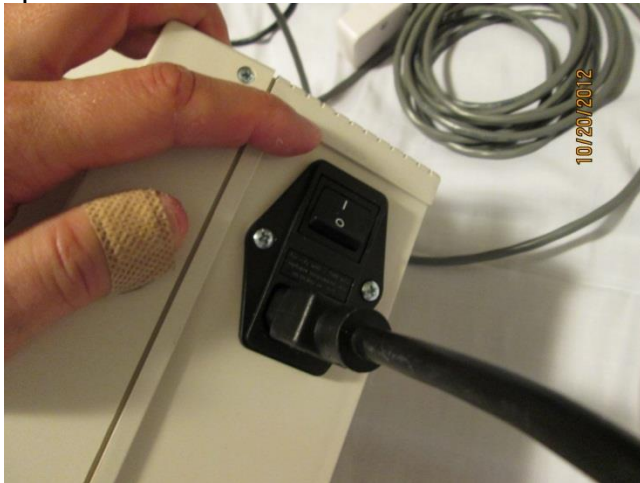


So you end up with two identical sets of paddle(s) connected to the base by one long wire

10. Plug the two smaller paddles into the ports where it says small paddle



11. Turn on the switch in the back of the unit – you should see the red power indicator light - light up red





12. Push start, and all the paddles should light up for 7 minutes (along with the green running indicator light) And shut off automatically after 7 min.



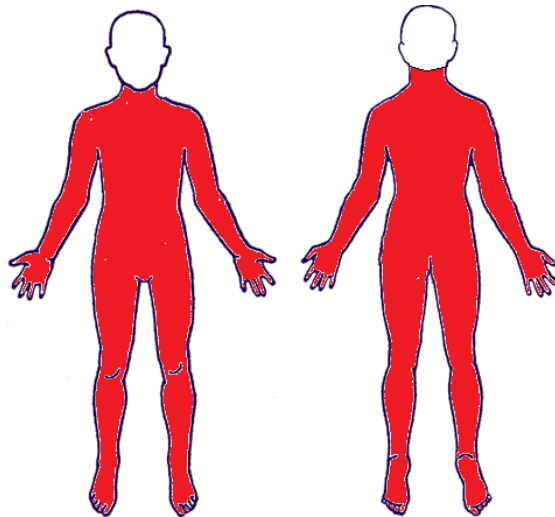
## Operating Instructions

1. Assemble the Vevazz Base Unit, Large Paddles and Small Lymphatic Paddles as illustrated in the Assembly Instructions. Plug in the number of Small Lymphatic Paddles to be used. Plug in the number of Large Paddles to be used.

2. **Large Paddle Placement** - Place each Large Paddle anywhere on the body below the neck, directly over the area needing to be treated. (See diagram below for areas of placement) Use the Velcro Patches as needed, to be put in place on the back of each Large Paddle using the adhesive, and the Vevazz Velcro Body Straps as needed in order to hold the Paddles in place.

### **Large Paddle Placement:**

**Place Large Paddles anywhere within the area marked RED**

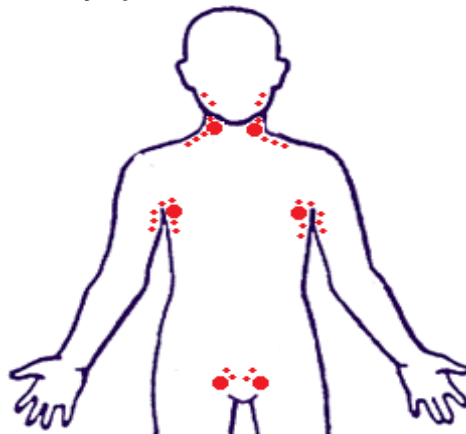


3. **Small Lymphatic Paddle Placement** - Each Small Lymphatic Paddle can be held in place by hand or placed under a waist band or other clothing. The Small Lymphatic Paddles are intended to be placed in the following areas (See diagram below for areas of placement):

- Below the diaphragm - in the inguinal lymph nodes
- Above the diaphragm - in the armpits
- Above the neck - in the subclavian lymph nodes

### **Small Lymphatic Paddle Placement:**

**Place the Small Lymphatic Paddles within the areas marked RED**



4. Press the Start Button to initiate the LED light delivery treatment cycle. The treatment cycle will terminate once the 7 minute timer has elapsed.

5. **How to Stop A Treatment Cycle:** Pressing the Stop Button during the treatment cycle will stop the treatment and reset the machine back to the Initial Screen Display. To begin a new treatment cycle, press the Start Button once again.

## **Contraindications**

Below is a list of contraindications - situations in which the Vevazz **SHOULD NOT** be used to deliver an LED light delivery treatment cycle. Contraindications are conditions or factors that serve as a reason to withhold treatment because it may be harmful to the patient. If at any time there is a question as to whether a treatment should be administered using the Vevazz, always consult a medical doctor first.

### **Not for use on:**

- **Open wounds or sores**
- **Minors**
- **People with a pacemaker**
- **People who have or are affected by photosensitivity**
- **People with epilepsy**
- **People with any form of cancer**
- **People with severe kidney problems**
- **People with severe liver problems**
- **People with thyroid problems**
- **Women who are pregnant or nursing**

## **Maintenance**

### **Cleaning and Disinfection**

<b>Item:</b>	<b>How Often:</b>	<b>Procedure:</b>
Small Lymphatic Paddles	After each use	Using a soft cloth dampened with warm soapy water or isopropyl alcohol, wipe the entire face of the small lymphatic paddle, including the plastic window of the light-emitting surface. CAUTION: Do not allow liquid to enter any of the openings on the unit.
Large Paddles	After each use	Using a soft cloth dampened with warm soapy water or isopropyl alcohol, wipe the entire face of the large paddle, including the plastic window of the light-emitting surface. CAUTION: Do not allow liquid to enter any of the openings on the unit.

### **Preventative Inspection**

- Before each use, carefully inspect the Vevazz Base Unit to make sure it does not appear damaged.
- Before operation the user should also check all Large Paddles and Small Lymphatic Paddles to verify that the protective cover housing the LEDs is intact.
- Vevazz, LLC has no serviceable or calibration requirements.

## **Specifications and Contact Information**

### **Power Requirements**

**Power:** 120VAC@2A or 240VAC@1A

**Electrical output:** 15 VDC @ 8.5 AMPS

### **Model Specifications**

**LED:** Class 1 Non-Prescription

### **Environmental Specifications**

**Operating Temperature:** 10-40° C (50 - 104° F)

**Storage Temperature:** -30 - 55° C (-22 - 131° F)

**Relative Humidity:** 10 - 95% (storage), non-condensing

### **Storage**

Whenever possible, the Vevazz should be stored at room temperature in a cool, dry place.

Storage Specifications are as follows:

Temperature: -30° C - 55° C (-22° - to 131° F)

Relative Humidity: 10% to 95% (non-condensing)

15% - 95% (operating), non-condensing



**Contact Information**

In the United States or Canada Contact:

Vevazz, LLC

30520 Rancho California Road

Suite 107-46

Temecula, CA 92591

Tel: (773) 665-4005

Fax: (888) 234-2765

URL: [www.vevazz.com](http://www.vevazz.com)